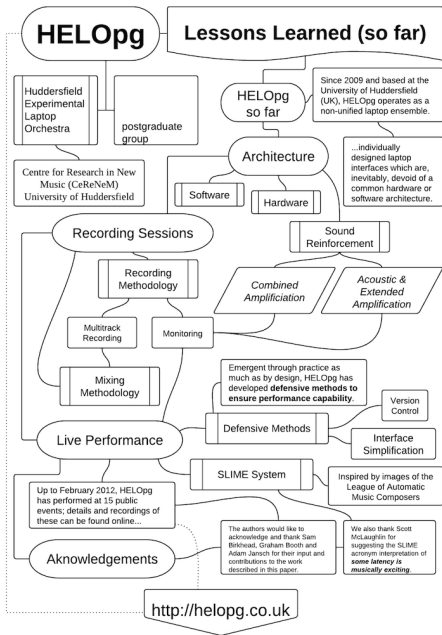


The Slime System

Julian Brooks, Samuel Freeman and Scott Hewitt

HELOpG - Previous Adventures

- ▶ Est. October 2009
- ▶ helopg.co.uk/blog
- ▶ lptp.helopg.co.uk
- ▶ (SLEO, April 2012)



SLIME

- ▶ To sync/merge further into the emergent soundworld
- ▶ Inspired by the image of the League of Automatic Music Composers



SLIME Stats

- ▶ Laptops
 - ▶ 2 x Macbook
 - ▶ 1 x Debian Laptop
 - ▶ 1 x Fedora Netbook
- ▶ RPI x3
- ▶ Router

Building SLIME

- ▶ Infrastructure
- ▶ Environments
- ▶ UDP vs TCP

Infrastructure

- ▶ Built on RPI
- ▶ DNS Server (.slime.test)
- ▶ Git Server
- ▶ NamespaceTV

Environments

- ▶ ChuckK
- ▶ PD
- ▶ Max
- ▶ Live

Namespaces

- ▶ Built upon proposed standard
- ▶ Human readable
- ▶ API Like

Slime for all

- ▶ <https://github.com/organizations/HEL0pg/>
- ▶ RPI Image

Compositional Ideas

- ▶ Code as Composition
- ▶ API Composition

The future with SLIME